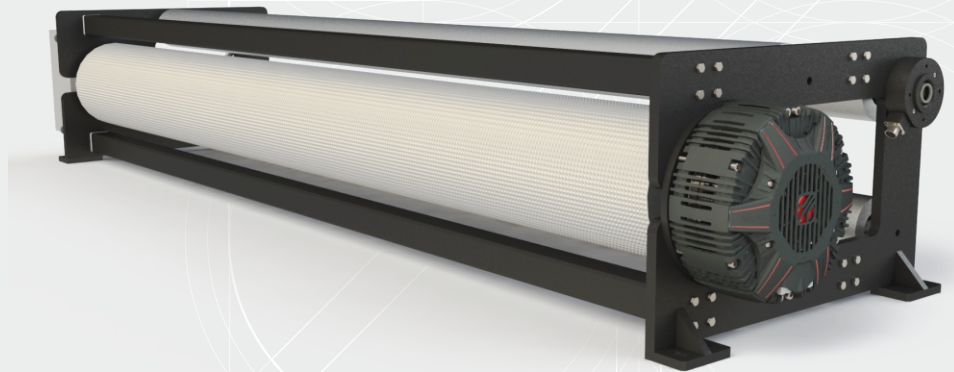




RETENS

TENSION CONTROL SYSTEM

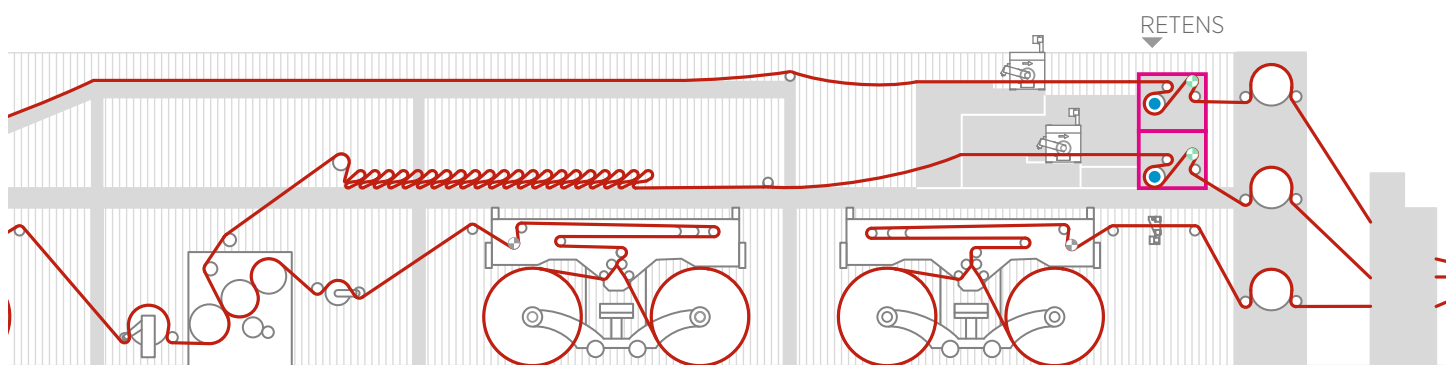


- ✓ Combiflex or Extreme pneumatic brake on board
- ✓ T-one tension controller
- ✓ CK trough shaft load cells or CF flange load cells
- ✓ compact size
- ✓ complete system for a quick and easy installation
- ✓ kit components for retrofit available

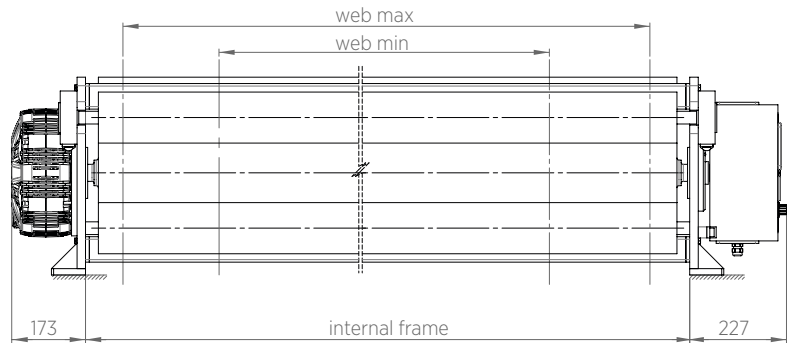
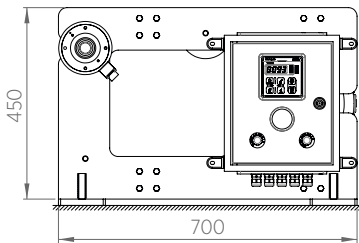
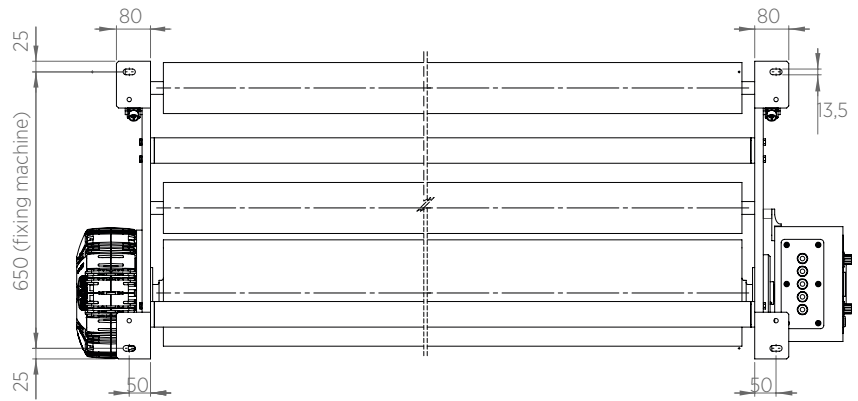
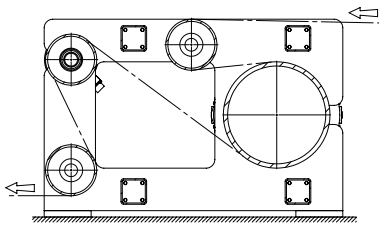
The ReTens system allows to control the tension of the material at the exit of the bridge of the corrugated board machine before the joining phase of layers.

The system is made up of the EP 25 electro-pneumatic panel, where a **standard T-One** is installed and by which the operator can smoothly set and control the ideal web tension, the CF flange or CK shaft through load cells, to check the web tension, and the Combiflex or Extreme pneumatic brake.

The T-One tension controller guarantees a **precise web tension regulation** using the signal coming from load cells and gives the right input to the brake. Its strong points are the ease of use and the compact size.



RETENS FRAME



T-ONE CHARACTERISTICS

Supply	24 Vdc
Power	8 W max
Analog input 0÷20 mV / 4÷20 mA	1 max nr.2 load cells
Analog input 0÷10 V	1 remote setpoint or line speed
Digital inputs 24 V	2 remote controls
Analog output 0÷10 V / 4÷20 mA	1 PID torque control
Analog output 0÷10 V	1 tension proportional or dancer roller piston contro
Digital relay outputs 24 Vdc / 24 Vac	2 for alarms
Weight	400 g
Working temperature	0÷50°C
IP protection class	IP 20 (case) IP 52 (frontal panel)
Dimensions	109 x 109 x 67 mm